

To apply for FS 360, contact a Family Support Provider in your area:

Providers	Areas Served	Phone
Benchmark	Statewide	605.644.7370
Black Hills Special Services Cooperative	Western & Central SD	605.347.4467
Dakota Milestones	Central & Southeast SD	605.734.5542
Center for Independence	Northeast SD	605.352.5698
LifeQuest	Southeast & Northeast SD	605.996.2032
LifeScape	Southeast SD	605.444.9500
SESDAC, Inc	Southeast SD	605.624.4419
Volunteers of America	Southeast SD	605.334.1414

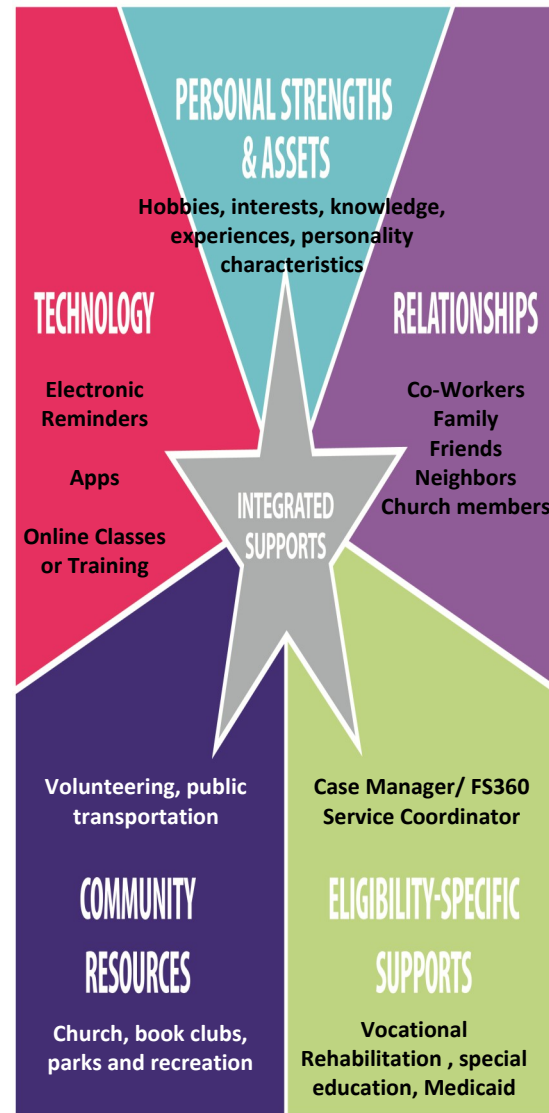
### What to talk about with a Provider

**Discovery & Navigation:**  
Information, education, and training so you have the knowledge and skills to make decisions.

**Connecting & Networking:**  
Find the emotional support that comes with connecting to others who “have been there”.

**Goods & Services:**  
Assistance with day to day needs and/or caregiving to a family member with a disability.

An FS 360 Service Coordinator can help you find supports from many areas such as **personal strengths & assets**, **relationship-based supports**, **technologies**, **community resources**, and **eligibility specific supports**.  
For example:



### For more information, contact:

Department of Human Services  
Division of Developmental Disabilities  
Hillsview Plaza, 3800 E. Hwy 34  
c/o 500 E. Capitol Avenue  
Pierre, SD 57501  
Phone: 605-773-3438 or  
1-800-265-9684  
Fax: 605-773-7562



The Department of Human Services does not exclude, deny benefits to, or otherwise discriminate against any person on the basis of actual or perceived race, color, religion, national origin, sex, age, gender identity, sexual orientation or disability in admission or access to, or treatment or employment in its programs, activities, or services. For more information about this policy or to file a Discrimination Complaint you may contact: Discrimination Coordinator, Director of DHS Division of Legal Services, 3800 E. Hwy 34, c/o 500 E Capitol Ave, Pierre, SD 57501, 605.773.5990.

**Español (Spanish) - ATENCIÓN:** si habla español, tiene a su disposición servicios gratuitos de asistencia lingüística. Llame al 1.800.305.9673 (TTY: 711).

**Deutsch (German) - ACHTUNG:** Wenn Sie Deutsch sprechen, stehen Ihnen kostenlos sprachliche Hilfsdienstleistungen zur Verfügung. Rufnummer: 1.800.305.9673 (TTY: 711).

Published by the South Dakota Department of Human Services  
2,000 copies published at an approximate cost of 28 cents per copy

## Family Support 360



Broadening opportunities for people with developmental disabilities across the lifespan.

**Tel: (800) 265-9684 or 605-773-3438**

**Website: <https://dhs.sd.gov/developmentaldisabilities/familysupport360.aspx>**

## What is Family Support?

The Family Support 360 Program (FS 360) provides people and their families with services and supports to meet their unique needs.

The FS 360 Program is **self-directed**, which means the person and their family choose the services, the staff who provide them, and a schedule based on their needs.

FS 360 helps people and their family receive state funded services and other community services, together with natural supports (extended family members, friends, neighbors, church congregations, and community organizations).

Each person receiving FS 360 services chooses a Family Support Service Coordinator who will help you find state funded services, community services, and natural supports. Once these services and supports are found, the Family Support Service Coordinator will help you control a budget for your services. Most importantly, your Family Support Service Coordinator will advocate for **you and your family**.

## Services & Supports

The supports listed below are eligibility specific and are just one area of supports to explore and help you achieve your good life.



**Service Coordination**– Assist individuals to access services and identify natural supports.



**Environmental Accessibility Adaptive Equipment**– Changes to the home to improve independence.



**Vehicle Modifications**– Changes to your vehicle to improve community access.

**Companion Services**– Services to improve social and independent living skills.

**Supported Employment** – Supports to gain employment and earn at least minimum wage.

## Services & Supports Cont.



**Personal Care** - Help with tasks such as bathing, eating, and personal hygiene.

**Special Medical Adaptive Equipment and Supplies** - Items to help with activities of daily living.

**Nutritional Supplements** - Prescribed to support an individual's dietary needs.



**Respite Care** – Short term relief for care givers.



**Other Available Services** – Supports for families who provide much of the day-to-day care which enhance the opportunities for the person throughout their lifespan (e.g. development of knowledge & skills, making connections with others who have similar experiences, and qualifying goods & services.)

## Who is Eligible?

Administrative Rules of South Dakota § 67:54:09:12 describes the eligibility for FS 360, which can be found at:

<http://sdlegislature.gov/Rules/DisplayRule.aspx?Rule=67:54:09:12>

To learn more about eligibility for the FS 360 program, contact a family support provider in your area (contact list can be found within this brochure). You can also contact the Division of Developmental Disabilities with questions about eligibility.

## Know Your Rights

If you don't agree with a decision about your eligibility for FS 360 services, you may ask for a fair hearing and for help with the fair hearing from an advocate. Contact the Division of Developmental Disabilities to learn about your rights.



Disability Rights South Dakota is the non-profit legal services agency dedicated to protecting and advocating for rights and inclusion of South Dakotans with disabilities—  
<https://drsdlaw.org/>